

Partners
and stakeholders

Joe Penfold
Community Support Officer
111, 112 & 113, Church Hill, South March, Leicestershire, LE12 7JH
01530 211111
j.penfold@leicestershire.gov.uk

Leicestershire & Rutland County Council
The Leicestershire Partnership Programme

The Landscape Partnership Programme

Part of the Heritage Lottery Fund
Part of the National Lottery Heritage Fund
Part of the Leicestershire Partnership Programme

For more information, contact:
The Leicestershire Partnership Programme
111, 112 & 113, Church Hill, South March, Leicestershire, LE12 7JH
01530 211111
j.penfold@leicestershire.gov.uk

Silvestones & Comdon Hill Country

What is our LPS all about?

- Dominated by rolling edges of the Silvestones and Comdon/Slophey Hill
- Rich in agricultural, natural and cultural heritage of Leicestershire and national significance
- Managed by a Partnership of professional and voluntary organisations
- Delivery between 2013 and 2020
- Project is worth £2.7m, £1.35m from LFF



Involving the community

Local Sustainable Transport Fund (LSTF) secured to consult local individuals and stakeholders in the local area. Development of a multi-use trail that links heritage sites in the northern part of the scheme area.

Part 1 - Countryside For All
Heritage Interpretation, Church South March - Workshop and training
Site March - site visit and access audit

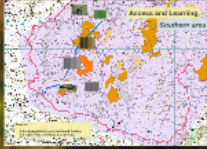
Part 2 - Heritage Interpretation

Joe Penfold
Community Officer

Leicestershire Partnership Programme
111, 112 & 113, Church Hill, South March, Leicestershire, LE12 7JH
01530 211111
j.penfold@leicestershire.gov.uk

Programmes and Projects

Heritage Interpretation
Countryside For All
Countryside for All
Countryside for All





Joe Penfold
 Community Support Officer
 1. Local Sustainable Transport Fund (LSTF)
 2. Local Enterprise Partnership (LEP)
 3. National Lottery
 4. Local Council
 5. Local Businesses
 6. Local Residents

Joe Penfold
 Community Support Officer
 01509 260000
 jpenfold@lepp.org.uk

The Landscape Partnership Programme

Enter to the Heritage Lottery Fund
 - For areas of exceptional natural or cultural heritage
 - Must be of national importance
 - For areas of natural or cultural heritage
 - Must be of national importance
 - For areas of natural or cultural heritage
 - Must be of national importance

Silberstones & Comdon Hill Country

What is our LPS all about?

- Dominated by rolling edges of the Silberstones and Comdon/Slapshy Hill
- 125km² with exceptional natural and cultural heritage of Cambridgeshire and national significance
- Managed by a Partnership of professional and voluntary organisations
- Delivered between 2013 and 2020
- Project is worth £2.75m, £1.25m from LEP



Joe Penfold
 Community Officer

Local Sustainable Transport Fund (LSTF)
 Local Enterprise Partnership (LEP)
 National Lottery
 Local Council
 Local Businesses
 Local Residents

Involving the community

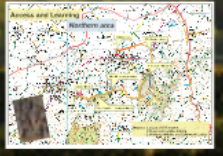
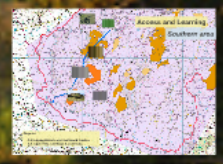
Local Sustainable Transport Fund (LSTF) secured to consult local individuals and stakeholders in the local location. Development of a multi-use trail that links heritage sites in the northern part of the scheme area.

Part 1 - Countryside For All
 Forebushy Comprehensives Church
 South March - Workshop and training
 Old March - site visit and access audit

Part 2 - Heritage Interpretation

Programmes and Projects

- Heritage Interpretation
- Local Enterprise Partnership
- Local Sustainable Transport Fund
- National Lottery
- Local Council
- Local Businesses
- Local Residents



Joe Penfold Community Officer

- *Landscape Partnerships Programme*
- *Context of our Scheme*
- *Overview of access projects*

Stiperstones &
Corndon Hill Country
LANDSCAPE PARTNERSHIP SCHEME



Bro Stiperstones a
Corndon Hill
CYNLLUN PARTNERIAETH TIRWEDD

The Landscape Partnerships Programme

- Funded by the Heritage Lottery Fund
- For areas of 'distinctive' landscape character
- Must address breadth of heritage and involve local people
- Four main outcomes
- Managed by partnerships of organisations
- For areas covering 20-200km²
- About 70 LPS nationally



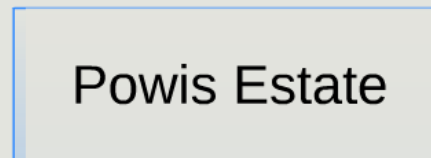
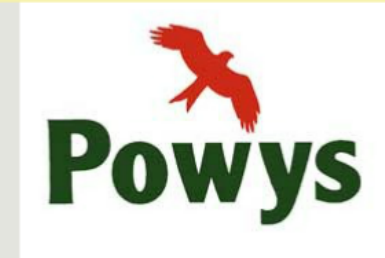
Stiperstones & Corndon Hill Country

What is our LPS all about?

- Dominated by parallel ridges of the Stiperstones and Corndon/Stapeley Hill
- 199km² with significant natural and cultural heritage of European and national significance
- Managed by a Partnership of professional and voluntary organisations
- Delivery between 2013 and 2018
- Project is worth £2.24m, £1.35m from HLF

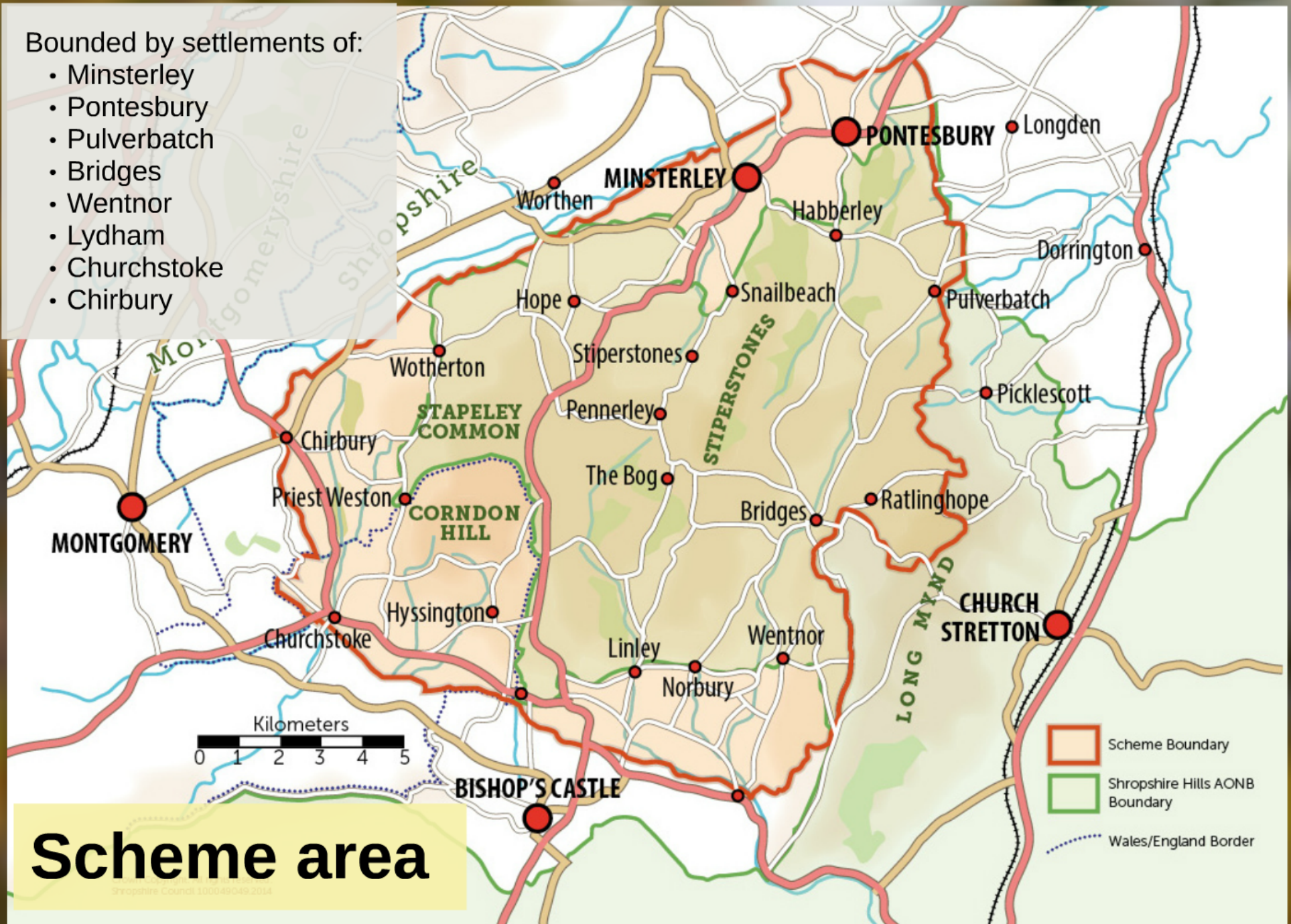


Who's involved? 18 organisations representing statutory, community and special interests



Bounded by settlements of:

- Minsterley
- Pontesbury
- Pulverbatch
- Bridges
- Wentnor
- Lydham
- Churchstoke
- Chirbury



Programmes and Projects



1. Scraping Beneath the Surface

- Coal and Transport
- Lead & Barytes Mining
- Rescuing Rocks and Overgrown Relics



2. Land Between Lands

- Open Hills, Old Ways & Commons
- Helping Hillforts and Earthwork Castles



3. Remarkable Wildlife

- Wildflower Meadows, Pastures and Verges
- Buzz in the Borders
- Ground-nesting Bird Recovery
- Community Wildlife Groups
- Products from the Landscape

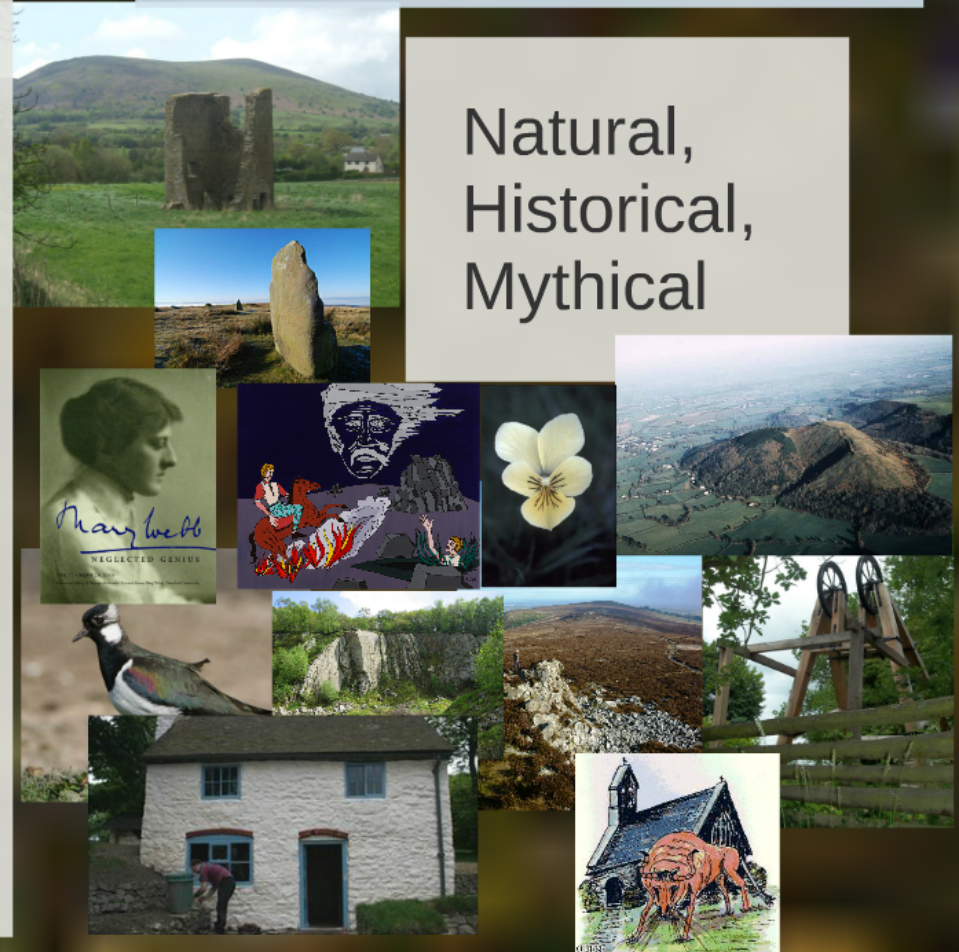


4. Resourceful People

- Farming & Smallholding
- Young People & Heritage
- Down to Earth
- Dynamic Hills Training Programme
- Accessible Records

A special landscape...

Natural,
Historical,
Mythical



es

- **Conserve and enhance** natural and cultural heritage
- **Community involvement** in heritage
- Increased **access** to and **learning** about heritage
- Increased opportunities for **training** in heritage skills



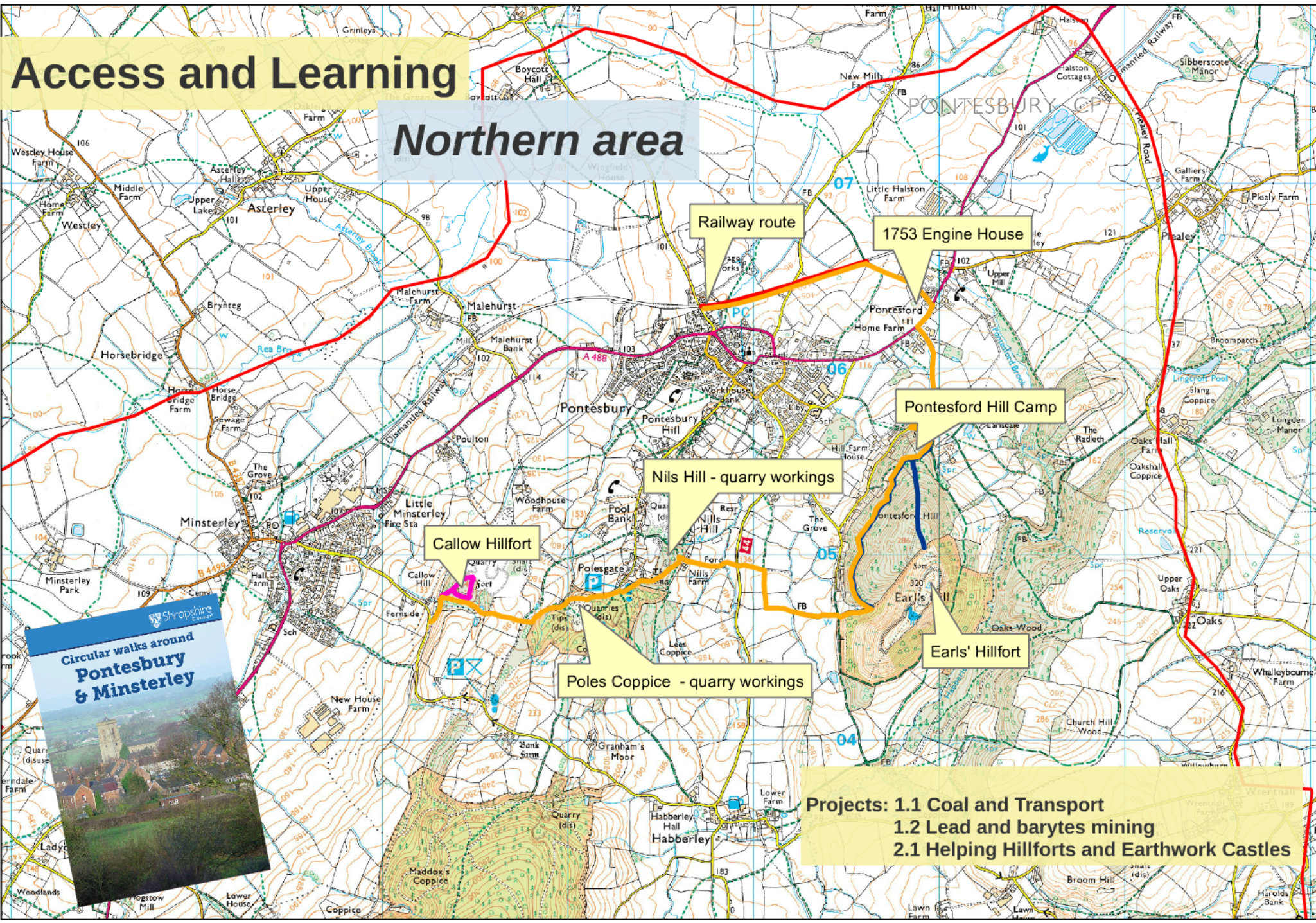
Four outcomes

- **Conserve and enhance** natural and cultural heritage
- **Community involvement** in heritage
- Increased **access** to and **learning** about heritage
- Increased opportunities for **training** in heritage skills



Access and Learning

Northern area



Railway route

1753 Engine House

Pontesford Hill Camp

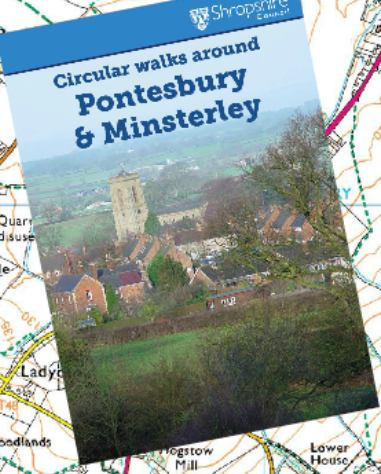
Nils Hill - quarry workings

Callow Hillfort

Poles Coppice - quarry workings

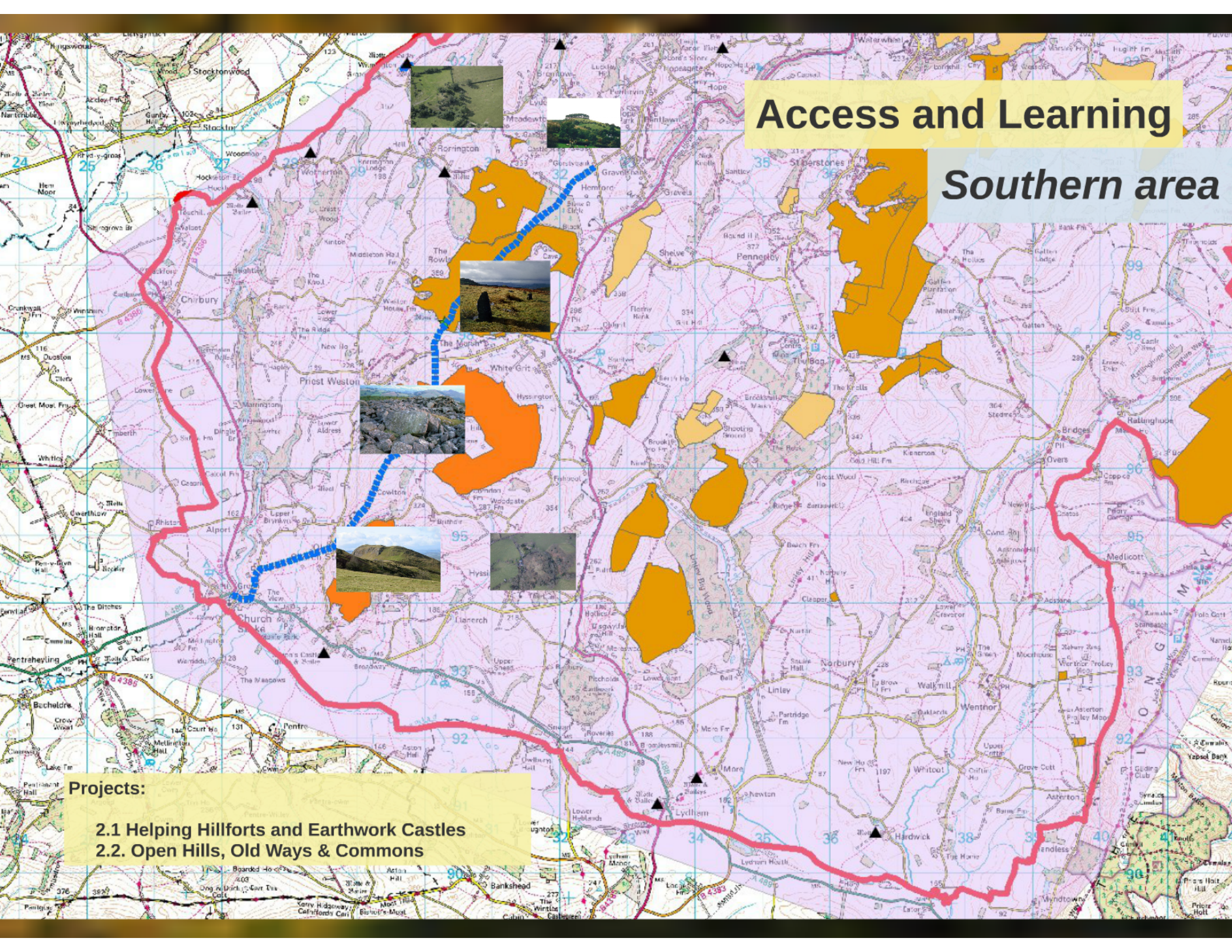
Earls' Hillfort

Projects: 1.1 Coal and Transport
1.2 Lead and barytes mining
2.1 Helping Hillforts and Earthwork Castles



Access and Learning

Southern area



Projects:

- 2.1 Helping Hillforts and Earthwork Castles
- 2.2. Open Hills, Old Ways & Commons

Involving the community

Local Sustainable Transport Fund (LSTF) secured to consult local individuals and stakeholders on the best practice. Development of a multi-user trail that links heritage sites in the northern part of the scheme area.

Part 1 - Countryside For All

Pontesbury Congregational Church

30th March - Workshop and training

31st March - Site visits and access audits

Part 2 - Heritage Interpretation

tbc





thankyou!

any questions?

Joe Penfold
Community Project Officer
Stiperstones and Corndon Hill Country Landscape Partnership Scheme
3 Shepherd's Yard
Chirbury
Shropshire
SY15 6BH

Tel: (01938) 561741
joe.penfold@shropshire.gov.uk
www.stiperstonesandcorndon.co.uk



Stiperstones &
Corndon Hill Country
LANDSCAPE PARTNERSHIP SCHEME



Bro Stiperstones a
Corndon Hill
CYNLLUN PARTNERIAETH TIRWEDD

